



# **CHRISTCHURCH SCHOOL OF GYMNASTICS**



## **CLASSIC 2021**



**APRIL 30th & MAY 1st & 2nd**

38 MARK TREFFERS DR

NORTH NEW BRIGHTON

QEII PARK

CHRISTCHURCH

PH 03 388 6616

[www.chchgymnastics.com](http://www.chchgymnastics.com)



**MEMBER CLUB**

## ENTRY LEVELS

MAG Level 1 - Senior Open  
WAG STEP 1 - Senior International  
WAG & MAG TEAMS

## EVENT FORMAT

WAG STEP 1 - 4 1 Day Competition  
WAG STEP 5 - SI 2 Day Competition  
MAG LEVEL 1 - 3 1 Day Competition  
MAG LEVEL 4 - SO 2 Day Competition

## COMPETITION FORMAT

1 Day Competition - AA, Apparatus & Team  
2 Day Competition - Day 1 - AA and Team  
Day 2 - Apparatus

## ENTRY FEES

\$55.00 - WAG STEP 1-4 & MAG LEVEL 1-3  
\$70.00 - WAG STEP 5 & 6 & MAG LEVEL 4-6  
\$75.00 - WAG STEP 7+ & MAG LEVEL 7+  
\$10.00 Team Entry

## PAYMENT

We will invoice your club upon receipt of entries.

## LATE ENTRY

At the Event Director's discretion and only if numbers permit.

## OPEN TRAINING

Open training will be available from 12:30 - 2:30 on Friday please make a booking with your entries.

## JUDGES

One judge per code and level entered required or a fine of \$50.00 may apply.

## HEAD JUDGES

WAG - Michele Hawke  
MAG - Toby Levine

## MUSIC

Music must be EMAILED in a MP.3 file to the Competition Organiser accompanying entries. Please clearly label each file with the athletes name, club and STEP. We are unable to accept music on the day!

## AWARDS

Apparatus and All Around - Medals  
Teams - Banner and Certificates.

## TEAMS

Consist of 4 Gymnasts - 3 scores to count, please name team on entry form.

## RECORDERS

Recorders as per requested.

## RESULTS

Results will be displayed via our video wall.

## TIMETABLE

Final timetable will be advised once entries have closed.

## ENTRIES

Closing Date - Friday 2nd April 2021.  
Email entries via affiliated clubs only to [maree.diver@chchgymnastics.co.nz](mailto:maree.diver@chchgymnastics.co.nz)



### ALERT LEVEL 1

- No restrictions on spectator numbers
- All spectators must sign in using the NZ COVID tracer App or sign in sheet.

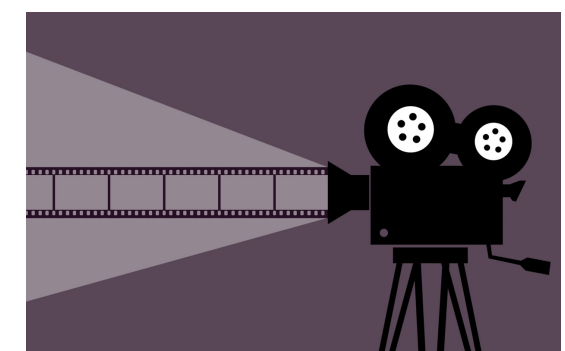
### ALERT LEVEL 2

- 1 spectator per gymnast.
- Additional spectators will not be allowed in.

### ALERT LEVEL 3

- If Canterbury was moved into Alert Level 3 the competition would be cancelled.

## PHOTOGRAPHY & VIDEOING



The taking of photos and videos will be permitted during this competition. CSG may utilise any media for marketing and promotional purposes. By entering this competition athletes understand and agree to the use of any content.